

New Zealand Health Stamps

Mette Kirstine Nielson (1873-1938), Danish by origin was the founder of New Zealand "HEALTH STAMPS". First New Zealand health stamp was issued in 1929.

At the suggestion of the Health Department it was decided to use the money from the Health stamp for Children's Health camp. Since 1929 New Zealand post has supported the work of the Health camps by issuing Health stamps making the relationship one of the country's longest running community partnerships.

1929
Nurse - Help stamp out
Tuberculosis



1931
Smiling boy, lake and
mountain landscape in the
Background with Lorraine cross



1932
Hygeia



1936
Lifebuoy - "safeguard health"



1938 Children Playing Outdoors ~ First Day Cover



1938



1937



Climber

1946, Soldier Helping Child over Stile



Health

Belgian Congo
1930 Congo Natives Protection Fund



Nurse weighing Children



Missionary and Child



Doctor and Tent Surgery



View of Local Hospital



Dispenser attending Patients



Nurses and Patients



Nurse bathing baby



Operating Theatre in local hospital



Children in School



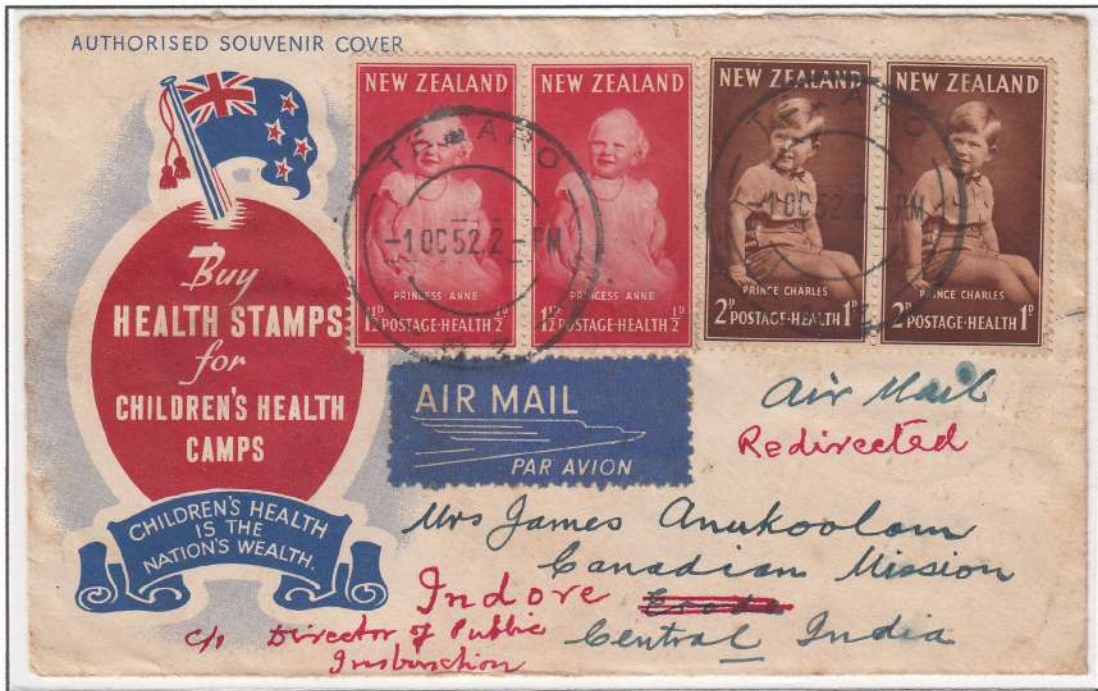
New Zealand
1953 Health

Used cover from
Eastbourne, New-
Zealand to Indore,
Central India.

Stamps: Girl Guides
marching, Boy Scout
boiling a billy.

Health Stamps

1952
Princess Anne and Prince Charles



Posted on 1 Oct 1952 Te Aro, New Zealand, redirected from Erode to Indore. Postmark of Erode West dated 7 Oct 1952 and Postmark of Indore dated 10 Oct 1952. Scanned picture of postmarks shown



Scanned picture depicting postmarks of Erode and Indore dated 7 Oct 1952 and 10 Oct 1952 on the backside.



1945
Peter Pan statue
Kensington gardens



← Used stamps →

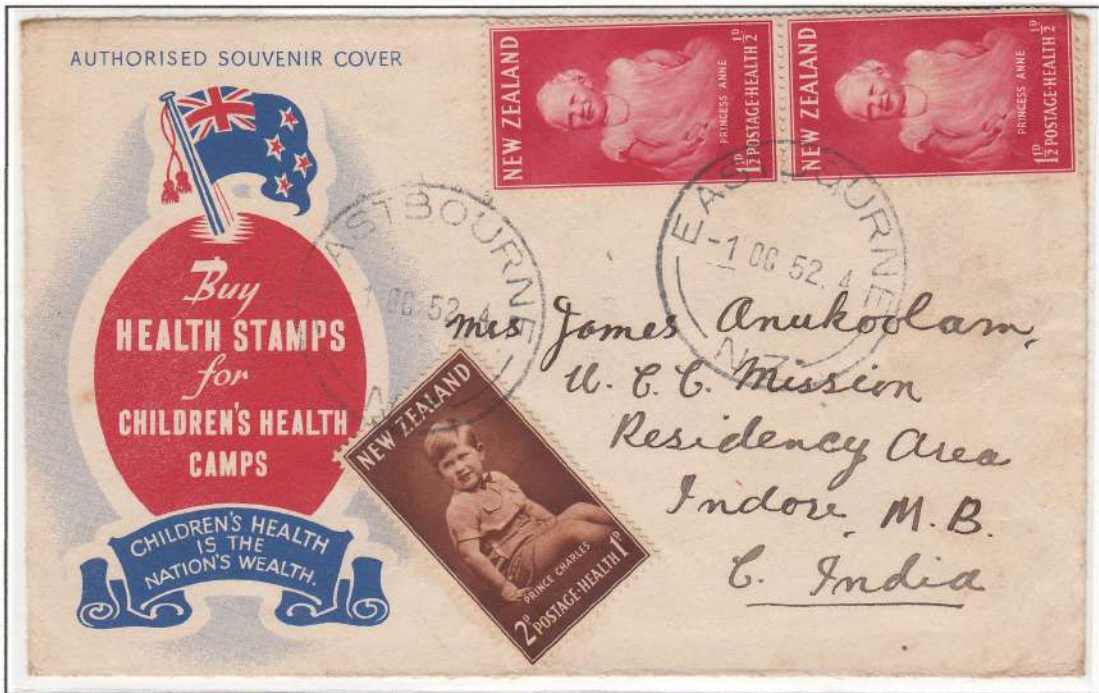
1949
Nurse, Child and Apple Blossom



New Zealand Health Stamps

Interesting set of used covers from various places in New Zealand to a single-family group of 'Anukoolum' in India residing in two different places of Indore, Central India and Bangalore, South India. The covers displayed here are from 1949 to 1963.

1952
Princess Anne and Prince Charles



Posted on 1 Oct 1952, reached Indore on 1 Nov 1952 (postmark on the back) 12.30pm

1952
Princess Anne and Prince Charles



Posted on 1 Oct 1952, Blenheim, reached Indore on 13 Nov 1952 (postmark on the back) 1.30pm

New Zealand Health Stamps

1984
Clydesdale Horses



Shetland Horses



Thoroughbred Race Horse



1983

Miniature Sheet - Tabby Cat, Seal Point Siamese Cat, Persian Cat



1985

Princess of Wales and Prince William, Princess of Wales and Prince Henry, Prince Charles, Princess of Wales, Prince William and Prince Henry



New Zealand Health Stamps

1990

Jack Lovelock ~ Olympic Gold Winner, Rhodes Scholar and Medical Doctor
George Nepia / All Black



Jack Lovelock
(Olympic Gold Winner)
Rhodes Scholar and
Medical Doctor

NEW ZEALAND SPORTING HEROES

JACK LOVELOCK
1910-1989
Athlete and Rhodes Scholar.
1932 - British Mile Record, 4 min. 12.8 sec.
World record three-quarter mile,
3 min. 2.2 sec.
New Zealand Olympic team
— Los Angeles — unplaced.
1933 - World Mile record, 4 min. 7.6 sec.

GEORGE NEPIA
1905-1986
Played 46 times, 9 tests, as All
Black (fullback).
Member of 1924 Invincibles.
Scored 99 points from 1 try, 39
conversions and 6 penalty goals.



George Nepia

1992

Anthony Wilding ~ Tennis Player, Stewie Dempster ~ Cricketer



Anthony Wilding
(Tennis Player)

NEW ZEALAND SPORTING HEROES

ANTHONY F. WILDING
1883 - 1915.
Tennis Player.
Davis Cup doubles (with N. Brookes, Aust), 1907, 1908, 1909 and 1914.
Wimbledon singles champion, 1910, 1911, 1912 and 1913.
Wimbledon doubles, 1907, 1908, 1910 and 1914.
Killed in action in France.

C. S. (STEWIE) DEMPSTER
1903 - 1974.
Cricket Player.
Played 10 Test matches for New Zealand.
Highest first class score - 212, average 44.98.
Highest Test score - 136, average 63.72.



Stewie Dempster
(Cricketer)

New Zealand Health Stamps

1996

Baby in Car Safety Seat, Little Girl on Crossing



Baby in Car Safety Seat



Little Girl on Crossing

2002

Basket of Fresh Fruit



Basket of Fresh Fruit



Fresh Fruit and Vegetables (Self-Adhesive)



Fresh Vegetables

1998 Health

Child Wearing a →
Lifejacket



← Child Learning
to Swim

New Zealand Health Stamps

2003
Swing, Hopscotch, Jungle Gym



Swing



Hopscotch

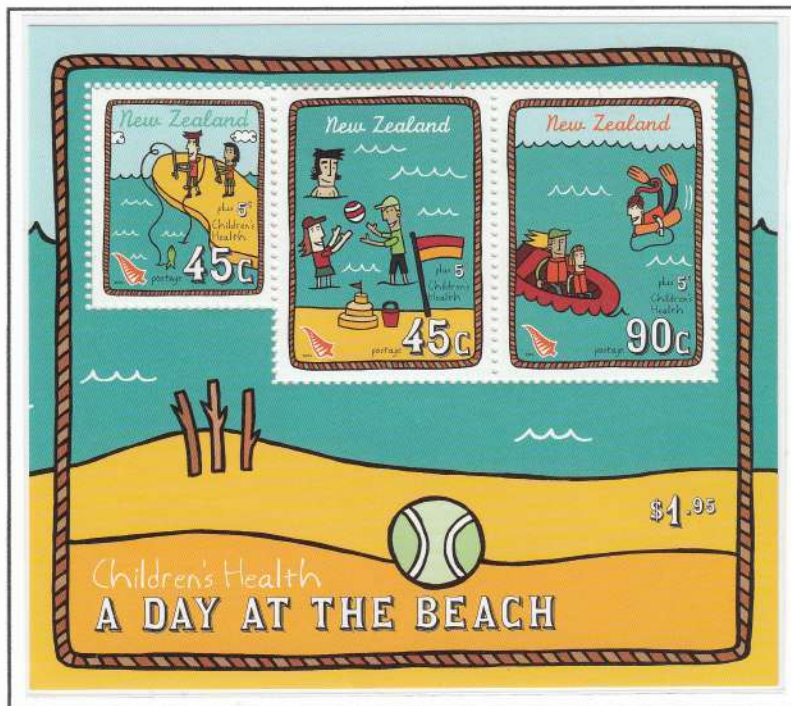


Jungle Gym
(Self-adhesive)

2004
Health - A Day at the Beach



Playing and Swimming
at the Beach



Water Sports

New Zealand Health Stamps

Mette Kirstine Nielson (1873-1938), Danish by origin was the founder of New Zealand "HEALTH STAMPS". First New Zealand health stamp was issued in 1929.

At the suggestion of the Health Department it was decided to use the money from the Health stamp for Children's Health camp. Since 1929 New Zealand post has supported the work of the Health camps by issuing Health stamps making the relationship one of the country's longest running community partnerships.

1929

Nurse - Help stamp out Tuberculosis



1931

Smiling boy, lake and mountain landscape in the Background with Lorraine cross



1932
Hygeia

1933

Pathway to Health

1936
Lifebuoy - "safeguard health"

1934
Health crusader

1935
key hole "key to health"



1937
Climber



1938
Children playing outdoors

1939
Beach ball
1d optd on 1/2d 2d optd on 1d



New Zealand Health Stamps

1939
Beach ball

1d optd on 1/2d

2d optd on 1d



1940
Beach ball (not optd)

1942
Two children on swing

1943
Princess Margaret

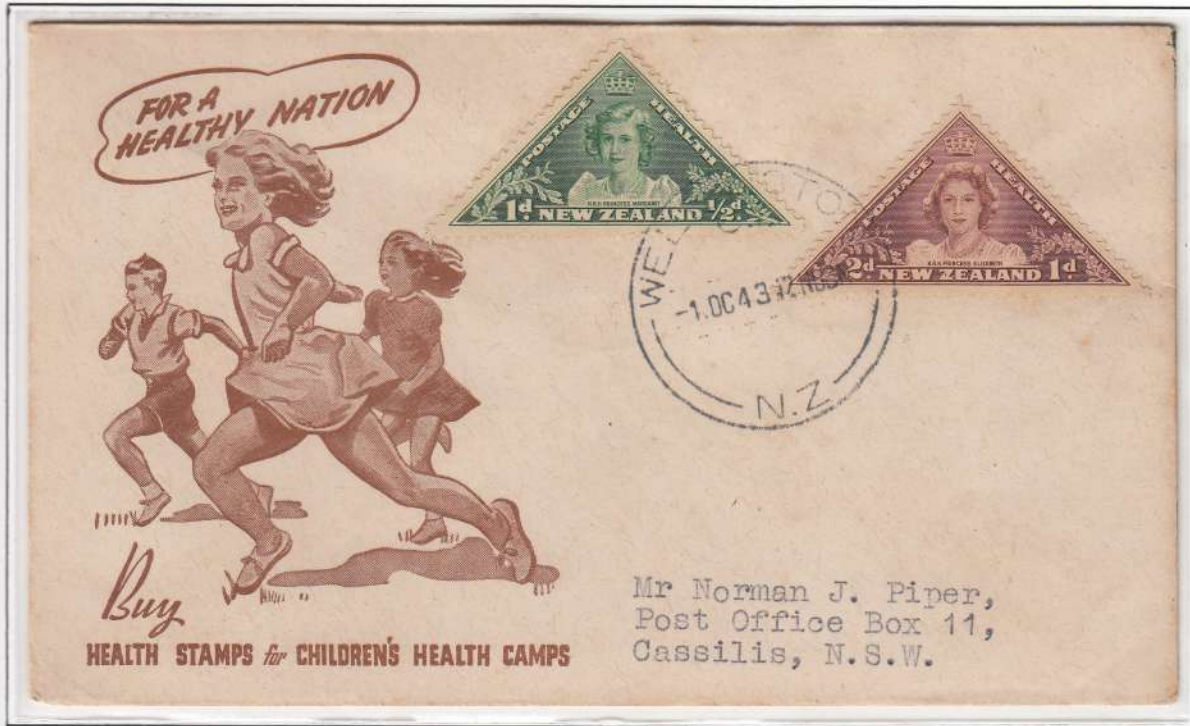
1943
Princess Elizabeth



New Zealand Health Stamps

1943

Used cover: Princess Margaret and Princess Elizabeth



1944
Princess Elizabeth and Margaret



Used cover with tete-beche stamps of Princess Elizabeth, six in number



1945
Peter Pan statue
Kensington gardens



New Zealand Health Stamps

1945

Used cover: Peter Pan statue, Kensington Garden



1947
Green Statue of Eros
Piccadilly Circus

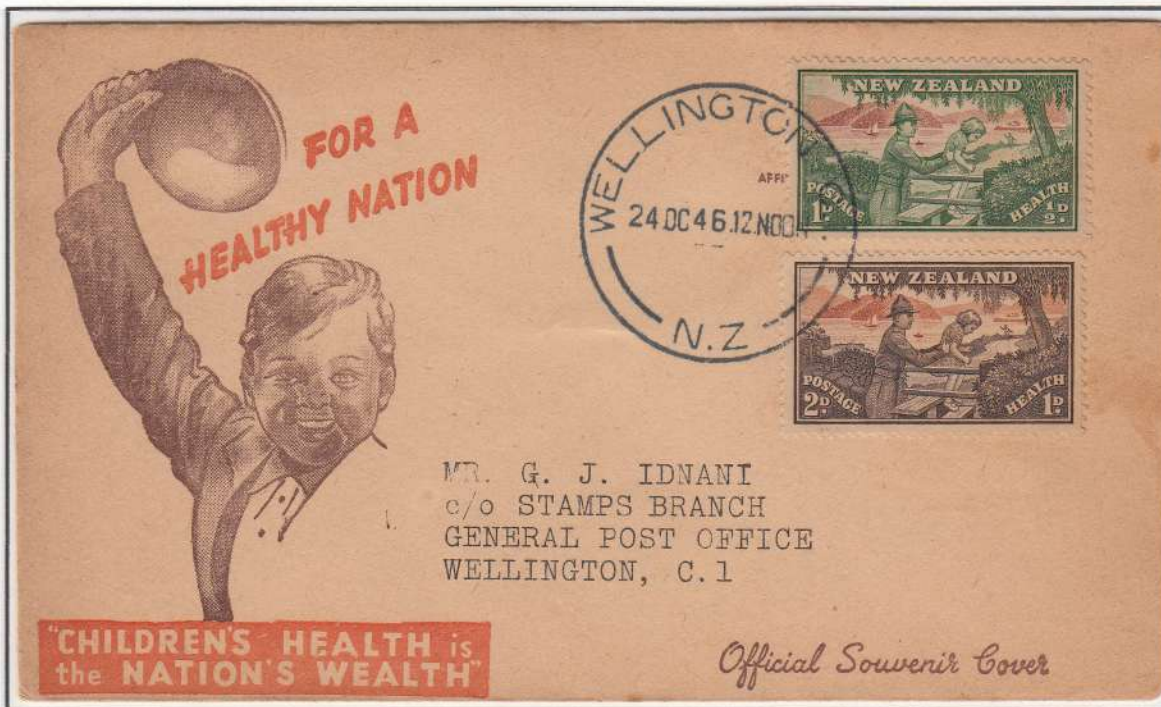


Red Statue of Eros
Piccadilly Circus



1946

Used cover: Soldier assisting child



New Zealand Health Stamps

1941
Overprint on Beach ball



1948
Roxburgh Health Camp



1949
Nurse, Child and Apple Blossom



1950
Princess Elizabeth and Prince Charles



1951
Takapuna Class Yachting Race



1952

Princess Anne



Prince Charles



New Zealand Health Stamps

1953

Used First Day Cover. Girl Guides Marching, Boy Scout boiling a Billy



Used cover posted on 7 Oct 1953 from Eltham, New Zealand 3.30 PM, reached Parel, Bombay on 16 Nov 1953, 8.30 AM (Postmark on the back)

1954

Young Trampler at Mount Aspiring (Everest)



1955

Child and Kowhai Flower Medallion



1956

Children Playing under Apple Tree



1957

Surf Life-savers

Swimming and Surf Canoe



New Zealand Health Stamps

1957

Miniature Sheet with six stamps with sideways watermark
Surf Life Savers



Swimming and Surf Canoe



New Zealand Health Stamps

1958

Miniature Sheet with six stamps. Girls Life Brigade, Boys Brigade

Miniature Sheet – Price 1/6



Miniature Sheet – Price 2/-



New Zealand Health Stamps

1959

Miniature Sheet with six stamps. Tete (Grey Teal)



Poaka (Pied Stilt)



New Zealand Health Stamps

1960

Miniature Sheet with six stamps. Kotare / Sacred Kingfisher



Kereru / Wood Pigeon



New Zealand Health Stamps

1961

Miniature Sheet with six stamps. Kotuku / White Heron, Karearea / Bush Hawk



New Zealand Health Stamps

1962

Miniature Sheet with six stamps. Kakariki / Red-crowned Parakeet, Tieke / Saddleback



New Zealand Health Stamps

1979

First Day Cover – Demoiselle Fish, Sea Urchin, Marin Diver/Photographer



1980 Miniature Sheet

Child Surf-Casting into the Sea, Two Children Fishing from Wharf, Snorkeling Diver Spear Fishing



New Zealand Health Stamps

1964

Miniature Sheet with eight stamps. Tarapunga / Red Billed Gull



Korora / Blue Penguin



New Zealand Health Stamps

1965

Miniature Sheet with six stamps. Kaka / Parrot



Piwakawaka / Fantail



New Zealand Health Stamps

1967
Rugby with shadow All Black



New Zealand Health Stamps

1968 Boy Running - Olympic Logo



Girl Swimming - Olympic Logo



New Zealand Health Stamps

1969, 50th Anniv of Health Camp Movement



Dr Elizabeth Gunn (23 May 1879 – 26 Oct 1963) was a New Zealand school and army doctor and public health official. She was a pioneer in the field of children's health, and was instrumental in the establishment of children's health camps in New Zealand. These camps were set-up for malnourished children to improve their health.

Camps were organized on a military-like schedule, creating an atmosphere that was somewhere between an open-air hospital and a scout camp.

Boys Cricket



Girls Cricket



1970



→ Girls Playing Netball



Boys Playing Soccer

1970 First Day Cover



New Zealand Health Stamps

1972 Boy and Girl Playing Tennis



New Zealand Health Stamps

1973
Prince Edward



New Zealand Health Stamps

The 1974 health stamps featured children and their pet cats and dogs. The relaxed composition of elements on the stamps reflecting the relaxed and playful relationship between pet and owner. The concept of the stamps was to highlight the health benefits of owning and playing with pets.

1974



Cat and a Dog



Cat and Two Dogs

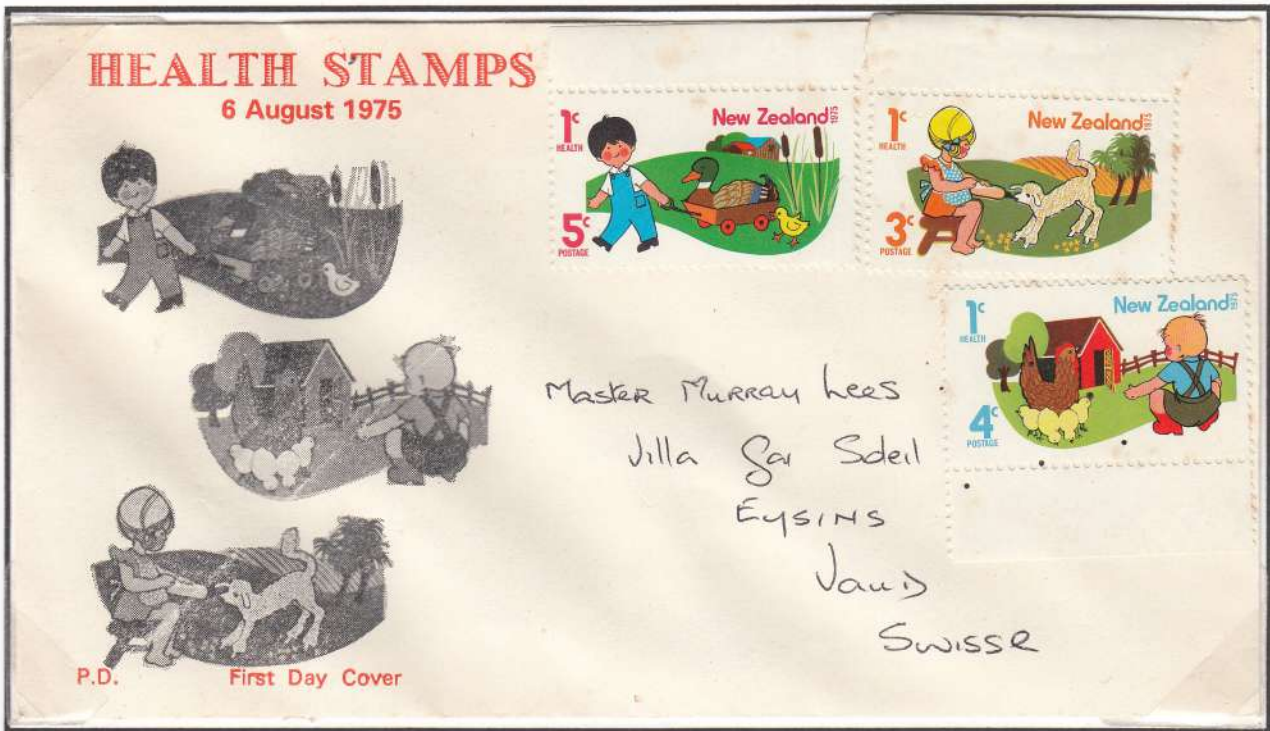


Two Dogs

1972, special cancellation
'Philatelic Youth Camp, Hamilton, N.Z



1975 First Day Cover



1975



Girl Feeding Lamb



Boy with Hen and Chicken



Boy Pulling Duck in Wagon

New Zealand Health Stamps

1976

Mint

Used



Boy and Pony



Rural Girl and Calf



Two Girls and Nesting Thrush



Boy and Pony



Rural Girl and Calf



Two Girls and Nesting Thrush

1977

1978



Girl with Pigeon



Boy with Frog



Girl with Butterfly



50th Anniv. of the First Health Stamp



National Heart Foundation/Heart Surgery



1979



Demoiselle Fish



Marine Diver/Photographer



Sea Urchin

New Zealand Health Stamps

1981

Miniature Sheet - Boy with a Fishing Rod, Girl with a Starfish, Boy and Girl in a Rock Pool with Crab



1982

Border Collie

Golden Labrador

Cocker Spaniel



New Zealand Health Stamps

1986
Football, Children Playing, Children Skipping



1987
Kite Flying, Swimming, Horse Riding

MINIATURE SHEET \$2.98



Horse Riding

New Zealand Health Stamps

1988

Seoul Olympic Games: Swimming, Track and Field
Canoeing, Equestrian



1989

Duke, Duchess and Princess of York, Beatrice and Sarah / Duchess and Princess of York
Beatrice / Princess of York



New Zealand Health Stamps

1991

Hector's Dolphins Underwater, Hector's Dolphins Close to Shore



1993

Boy With Pet Puppy, Girl With Pet Kitten



New Zealand Health Stamps

1995
Boy on Scout board, Girl on a bicycle



1997
Children on uncrowded beach, Child Horse riding, Fruit Picking



New Zealand Health Stamps

2001
Family Time Cycling, Catching Air/BMX



2012
Sea Lion Pup/Sub Antarctic Islands, Male Sea Lion/Stewart Island, Sea Lion Pup Closeup



New Zealand Health Stamps

Interesting set of used covers from various places in New Zealand to a single-family group of 'Anukoolum' in India residing in two different places of Indore, Central India and Bangalore, South India. The covers displayed here are from 1949 to 1963.

1949
Nurse, Child and Apple Blossom



1950
Princess Elizabeth and Prince Charles



New Zealand Health Stamps

Interesting set of used covers from various places in New Zealand to a single-family group of 'Anukoolum' in India residing in two different places of Indore, Central India and Bangalore, South India. The covers displayed here are from 1949 to 1963.

1959
Tete (Grey Teal) and Poaka (Pied Stilt)



Cover posted from Wairau Valley, New Zealand, 18 Sept 1959 to Rasalpara Mhow, India
Postmark on the back 23 Oct 1959

1960
Kotare / Sacred Kingfisher, Kereru / Wood Pigeon



Cover posted from Manners Street, Wellington, New Zealand 10 Aug 1960 to Kodaikanal, South India

New Zealand Health Stamps

Interesting set of used covers from various places in New Zealand to a single-family group of 'Anukoolum' in India residing in two different places of Indore, Central India and Bangalore, South India. The covers displayed here are from 1949 to 1963.

1957

Swimming and Surf Canoe, Surf Lifesavers



Cover posted from Blenheim, New Zealand, 25 Sept 1957 12 Noon

1958

Girls Life Brigade, Boys Brigade



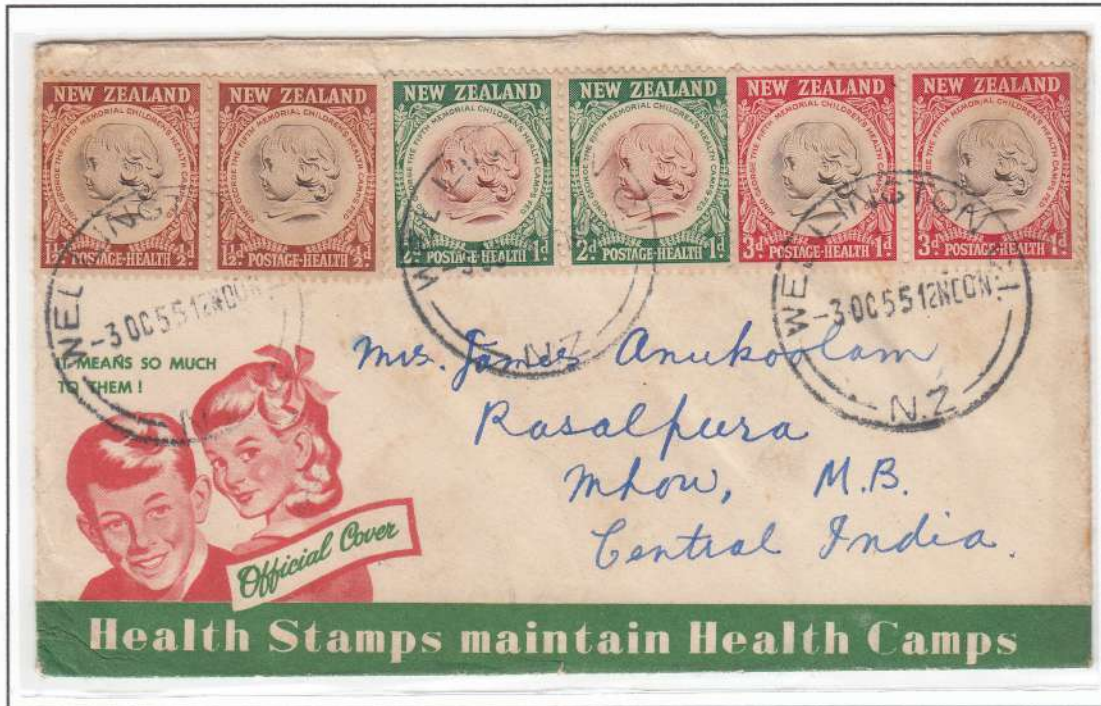
Cover posted from Paraparoumu Beach, New Zealand 20 Aug 1958.

New Zealand Health Stamps

Interesting set of used covers from various places in New Zealand to a single-family group of 'Anukoolum' in India residing in two different places of Indore, Central India and Bangalore, South India. The covers displayed here are from 1949 to 1963.

1955

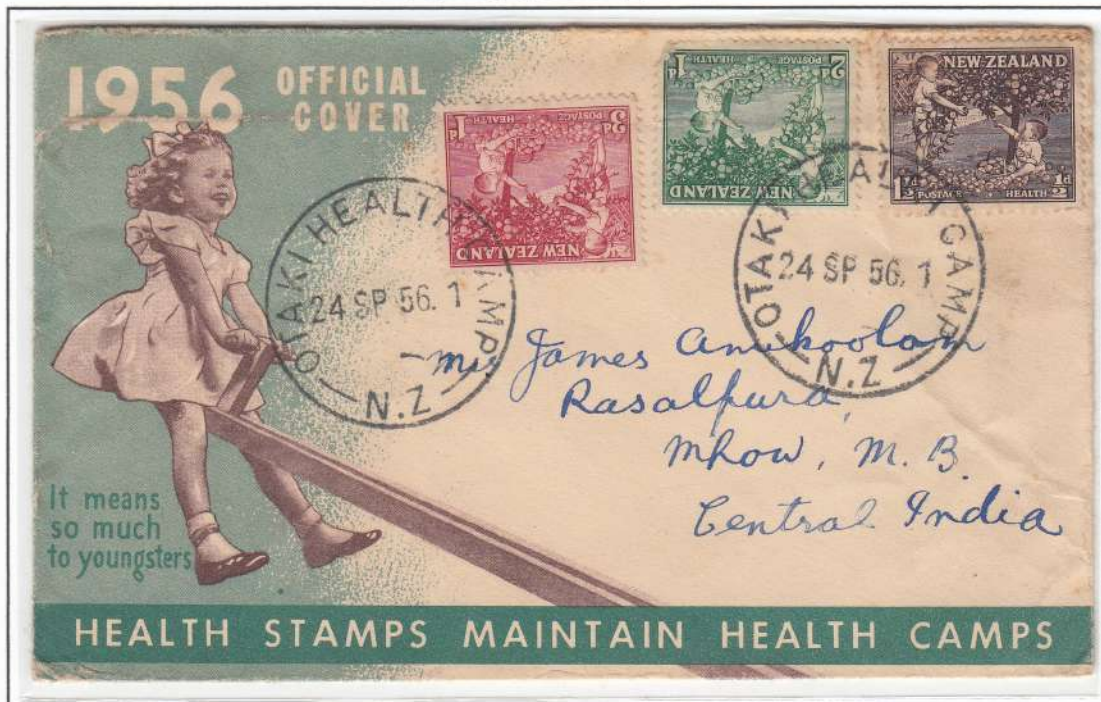
Child and Kowhai Flower Medallion



Cover posted from Wellington, New Zealand, 3 Oct 1955 12 Noon to Rasalपुरa Mhow, Madhya Pradesh, India.
Postmark on back 10 Nov 1955

1956

Children Playing under Apple Tree



Cover posted from Otaki Healthcamp, New Zealand 24 Sep 1956.
Reached Rasalपुरa Mhow, India 29 Oct 1956

New Zealand Health Stamps

Interesting set of used covers from various places in New Zealand to a single-family group of 'Anukoolum' in India residing in two different places of Indore, Central India and Bangalore, South India. The covers displayed here are from 1949 to 1963.

1953

Girl Guides Marching, Boy Scout boiling a Billy



Cover posted from Blenheim South Is, New Zealand, 7 Oct 1953 12 Noon to Indore, India.
Postmark on back 16 Nov 1953, 1.45 PM

1954

Young Trampler at Mount Aspiring (Everest)

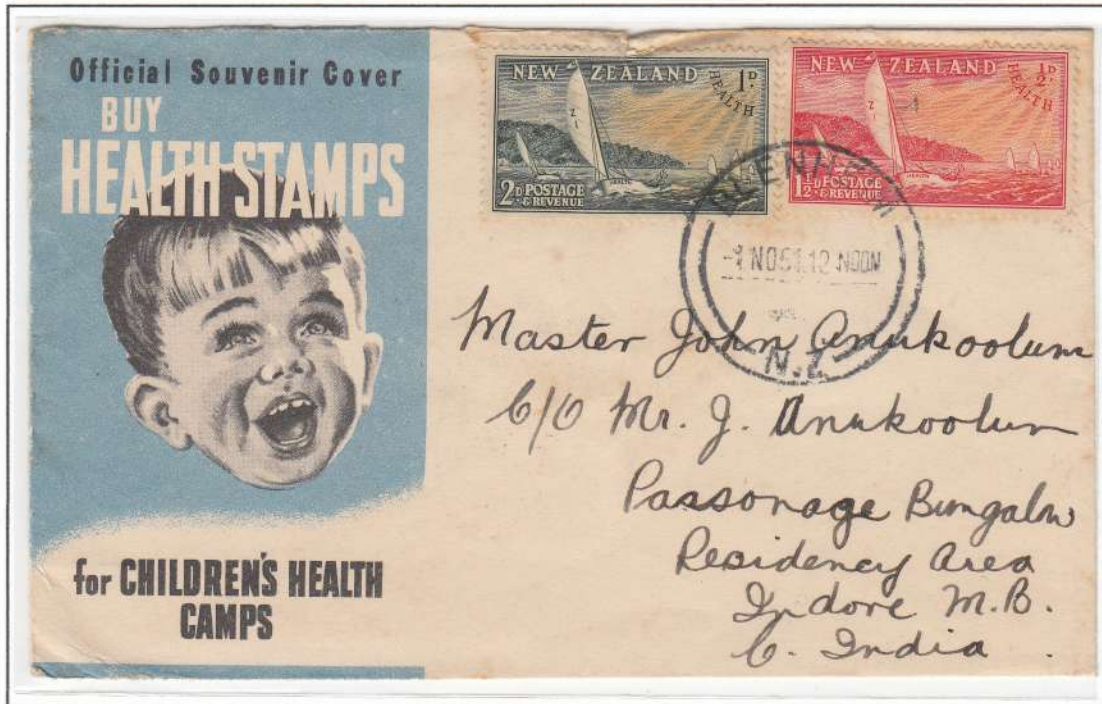


Cover posted from Eastbourne, New Zealand 4 Sep 1954. Reached Indore, India 14 Oct 1954

New Zealand Health Stamps

Interesting set of used covers from various places in New Zealand to a single-family group of 'Anukoolum' in India residing in two different places of Indore, Central India and Bangalore, South India. The covers displayed here are from 1949 to 1963.

1951
Takapuna Class Yachting Race



1952
Princess Anne and Prince Charles

